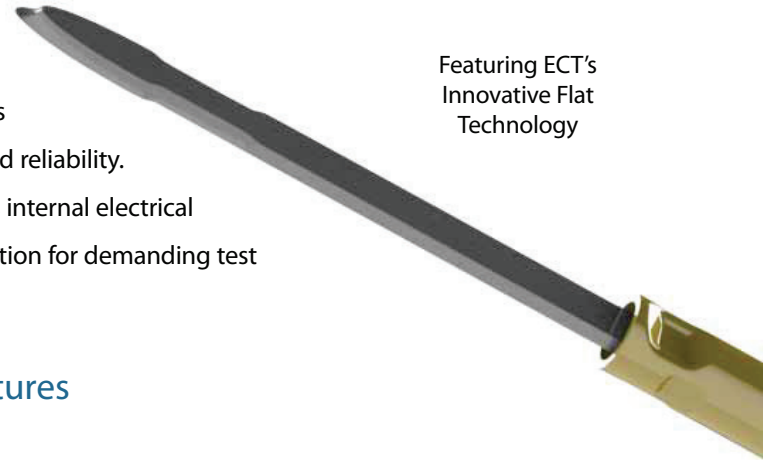


50 mil 75 mil 100 mil

### Lead Free Contact Products

ECT's EDGE series was designed to overcome some of the industries toughest testing challenges while providing superior performance and reliability. EDGE features ECT's innovative flat plunger technology that improves internal electrical performance and tip-to-target contact, making EDGE the perfect solution for demanding test applications such as penetrating OSP and no-clean flux residues.

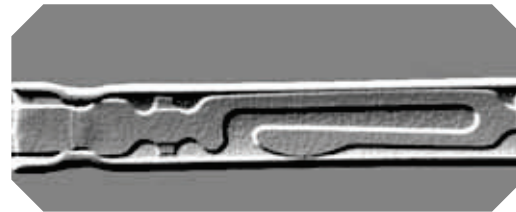
Featuring ECT's Innovative Flat Technology



### Unique Features

#### Micro-Wipe

EDGE's Micro-Wipe technology provides a constant low-friction internal contact yielding stable resistance without the need of lubricant. The absence of lube prevents the build up of "black stuff" on the plunger, and early probe failure, due to particle accumulation.



Enhanced X-Ray Photo

#### Flat Technology

Unlike traditional radial screw machine designs, ECT's photolithographic manufacturing process does not induce material stresses and provides for:

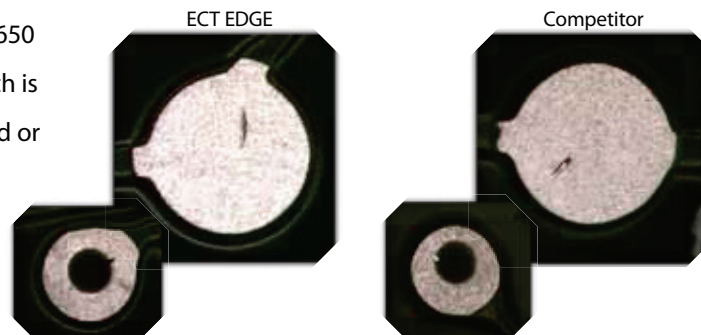
- Economical and repeatable, high volume production
- Improved surface finishes
- More consistent blade formation and tolerance control
- Outstanding plating quality



Flat vs. Round

#### Blade Tip

The EDGE probe tips feature a very hard 650 knoop LFRE plated steel base material which is up to 10x sharper than traditional machined or ground probe tips. EDGE tips are sharper, and last longer, resulting in more reliable pad and via testing, and an overall lower cost of test!

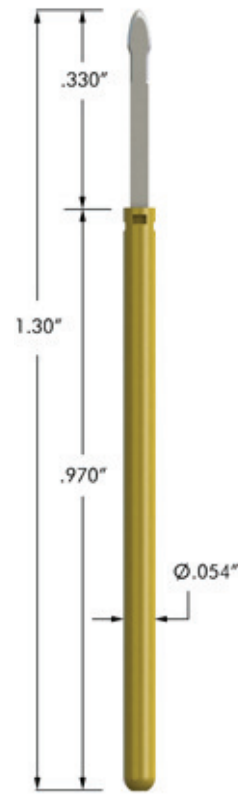
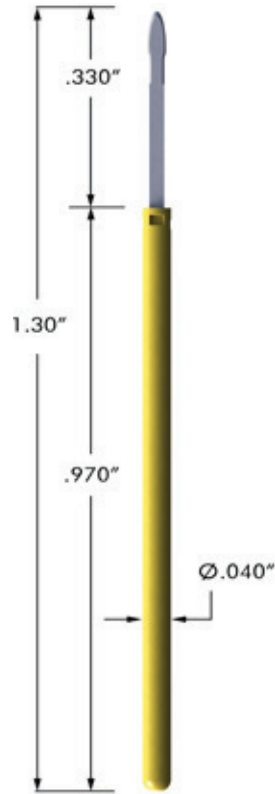


Witness Marks

## EDGE-1 75MIL

## EDGE-25 100MIL

Available Tip Styles



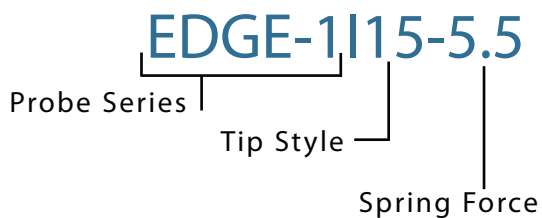
Available Tip Styles



### Specifications

EDGE-1			EDGE-25		
<b>MATERIAL</b>			<b>MATERIAL</b>		
STEEL, LFRE PLATED			STEEL, LFRE PLATED		
PHOS BRONZE, GOLD PLATED			PHOS BRONZE, GOLD PLATED		
STAINLESS STEEL			STAINLESS STEEL		
<b>MECHANICAL</b>			<b>MECHANICAL</b>		
.250"			FULL TRAVEL	.250"	
.167"			WORKING TRAVEL	.167"	
5.5 oz	7.0 oz	10.0 oz	SPRING FORCE @ WORKING TRAVEL	5.5 oz	7.0 oz 10.0 oz

### How To Order



Order by phone, fax or online.  
Tel: 909-625-9390 Fax: 909-624-9746  
[www.ectinfo.com](http://www.ectinfo.com)